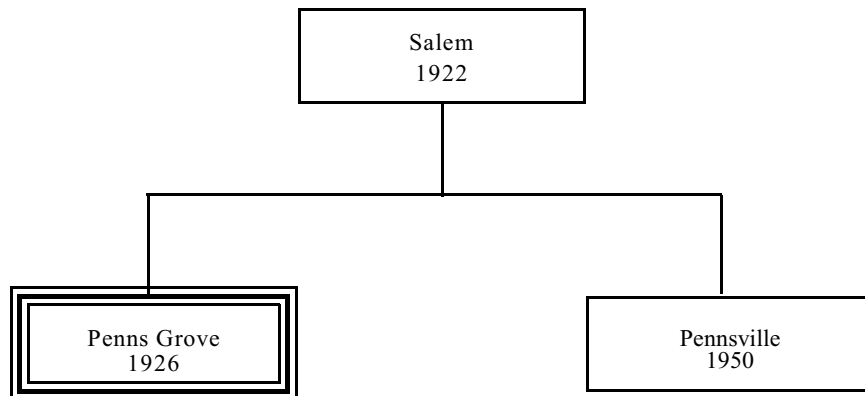


Chapter 12

Rotary Club of Penns Grove, N.J.



Organized	May 10, 1990	Meets : Tuesdays at 7:15 am at Woodbury Homesteader, 20 S. Broad St., Woodbury, NJ 08096 (609) 845-5310
Chartered	June 12, 1990	
Sponsored By	Woodbury	

Charter Members

OFFICE	NAME OF MEMBER	CLASSIFICATION
President	Robinson F. Willis	Hardware
Vice President	Warren L. Duncan	
Secretary	Thomas C. Summerill	Publishing
Treasurer	J. Milton Featherer	Banking
Director	Harry F. Elliott	Plumbing
Director	Thomas I. Holton	
	Hollis F. Ashcraft	Funeral Director
	Charles C. Cavanaugh	
	Walter J. Conine	Insurance
	Harry C. Davis	
	Herman A. Day	Automobile Repairs
	J.K. Freed Dolbow, Jr.	Roofing
	Frederick G. Engleman	
	John Farish	Auto Industry
	Frederic A. Gentieu, Sr.	Chemical Manufacturing
	Arthur R. Hall	Dentist
	E. Frank Horner	
	Walter S. Kidd	Postal Service
	William Kirk	Chemical Manufacturing
	Wilbert S. Leap	Clothing Retail
	Charles E. Rinda	Shoes Retail
	J. Landis Strickler	Dairy Products
	Lloyd W. Williams	Real Estate

Penns Grove's Rotary Heritage Among District Strongest

Sponsored by its neighbor club in Salem City and chartered March 26, 1926 as the 12th club in the current Rotary District 764, Penns Grove Rotary has maintained a youthful vitality by combining warm fellowship, good humor and total dedication while adhering to the lofty ideals of Rotary International.

How youthful has its vitality been? In 1957, Dr. Harold E. Woodward of the Penns Grove club served as district governor at the age of 69. At the time of his death in 1988, Dr. Woodward was still an active Rotarian in the Worcester, Mass. club at the young age of 100.

Penns Grove started in '26 with 23 charter members including Robinson F. Willis, president; Warren L. Duncan, vice president; Milton J. Featherer, treasurer; Thomas C. Summerill, secretary; and Harry F. Elliott and Thomas I. Holton, directors.

Interest in Penns Grove Rotary peaked during World War II when membership reached an all-time high of 60 during the boom era of Salem County. Employment and commerce flourished in the Penns Grove, Carney's Point and Pedricktown area as DuPont Chambers Works employed as many as 7,500.

Eventually the construction of the first span of the Delaware Memorial Bridge and the advent of a plethora of shopping malls cut into the business prosperity of Penns Grove and had an impact on Rotary membership. In recent years, membership has hovered around 40.

But, more importantly, club has never regressed from its commitment to the Four Avenues of Service.

Penns Grove Rotary historically has been involved in a wide range of community and charitable ventures. Its support of the youth of the area in Salem County is well documented. Some examples: Babe Ruth and Little League baseball; Twin Community Football League; Junior Rotarian of the Month; National Honor Society at local high schools; RYLA (District Youth Conference); Boys and Girls State (American Legion); high school scholarship awards; scholarship at Salem Community College; and post-prom parties, to name just a few.

Other civic projects have included supplying support for the YMCA and library, benches for the bus stops, refreshment stands and dugouts at the high schools, and a courtesy contest involving local businesses.

The club's extensive fund-raising line-up has featured, among other events, a chicken barbecue, sandwich sales, 50-50 raffle, auctions, fines for a variety of misdemeanors, merchandise club, community birthday calendar, raffle of donated pictures, and district-wide involvement in the Strike for Hunger through a Phillies' game.

On the national and international level, Penns Grove Rotary has reached the 10,100 percent level of Rotary Foundation participation, has 28 Paul Harris Fellows and 10 sustaining members, has been involved in Polio Plus, has actively taken part in the foreign exchange program, sent books to India, and sponsored Barbara Green as a scholarship student to Germany in 1972.

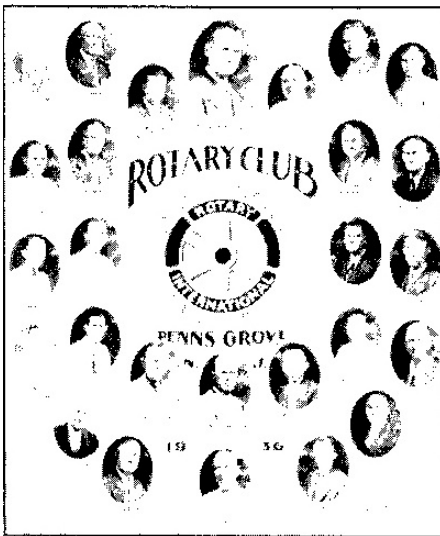
In its more than 60 years, the club has staunchly supported a long list of charitable events including food certificates at Christmas, Ranch Hope in Salem County, the American Red Cross, and Home Emergency Alert.

And internally, Penns Grove's Rotary spirit has been wonderfully evident through the years. Members enjoy singing the club's original club song, their club assemblies, and an effective buddy system as an attendance booster. They hold numerous social events, including picnics, and have been supportive of the College of Rotary Information.

Many of the aforementioned in all categories are long-standing activities still enjoyed by the club.

The late Dr. Woodward is one of two Penns Grove Rotarians who have had the honor of serving as district governor. Dr. W. Jack Clem, a member since 1955 and president in 1965-66, was governor in 1979. He is still active in both his Penns Grove club and in district Rotary matters.

Penns Grove, which sponsored the Media, Pa. Rotary Club in 1928, two years after receiving its charter, meets Thursdays at noon at the Holiday Inn of Penns Grove.



Presidents

1926-27	Robinson F. Willis	1958-59	Charles E. Gilpatrick
1927-28	Frederic A. Gentiew, Sr.	1959-60	Harold B. Hulst
1928-29	Gregory S. Levin	1960-61	Ervin S. Wiermam
1929-30	J. Milton Featherer	1961-62	Charles B. Willard
1930-31	William Kirk	1962-63	Wesley W. Fritz
1931-32	Hollis F. Ashcraft	1963-64	John W. Leonard
1932-33	Thurlow Frazer	1964-65	Martin L. Fried
1933-34	Charles E. Rinda	1965-66	W. Jack Clem, PDG
1934-35	Joseph W. Crockett	1966-67	Richard S. Wilder
1935-36	Joseph J. Noone	1967-68	J. Joseph Kuhn
1936-37	Thomas E. Shea	1968-69	Robert G. Bredenberg
1937-38	John M. Summerill, Jr.	1969-70	Harold Heinle
1938-39	J. Landis Strickler	1970-71	C. Monroe Edwards
1939-40	Harold E. Woodward, PDG	1971-72	Dallas E. Bobbitt
1940-41	Frank G. McVaugh	1972-73	Ralph J. DiVito
1941-42	John J. Dougherty	1973-74	Donald L. Masten
1942-43	Alvin J. Dohner	1974-75	Joseph T. Zappala
1943-44	Daun E. Nute	1975-76	Warren W. Homan
1944-45	E. Marshall Wilson	1976-77	Stephen D. Miller
1945-46	Josiah Summerill	1977-78	Ronald E. Sheriffs
1946-47	Maurice Brown	1978-80	Emo Garbini
1947-48	Paul D. Heuser	1980-81	George Feltus.
1948-49	Jack E. Drause	1981-82	Steven Ferrara
1949-50	Sud M. Siris	1982-83	William T. Luzzo
1950-51	Walter J. Smith	1983-84	Charles W. Erhardt, Jr.
1951-52	John Farish	1984-85	Harry, L. Casey
1952-53	Wilford E. Railing	1985-86	Joseph M. Crevino
1953-54	G. Stanley McCleave	1986-87	Robert J. Haines
1954-55	Sol L. Davidow	1987-88	Duff P. O'Connor
1955-56	Theodore R. Loney	1988-89	John G. Ashcraft
1956-57	W. Cheston Cowperthwait	1989-90	Louis Mitchell
1957-58	William R. Eisensmith		